



GAMEDAY
NETBALL CATALOGUE

HOW TO ORDER

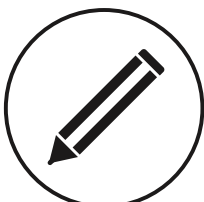
Ordering your custom DYO Gameday gear is made easy with only a few steps. Represent your Club, Team, School or Business in style with our fully customisable colour and design options. With our Online Kit Builder, you can see exactly how your unique design will look. Start designing now at codesport.co.nz.
Your team. Your colours.



STEP 1

Pick your style

Choose your sport CODE and style.



STEP 2

Choose your Studio Design

Each style has various Studio Designs to choose from.



STEP 3

Colour it

Colour up your chosen Studio Design with your colours. Don't see the colours you want or a Studio Design you like? Send us your artwork/logo and we can customise a design for your Team. Note some custom services may incur an extra fee. Talk to your Account Manager for more details.



STEP 4

Advise the quantity and sizes required per style

Refer to the size guide provided or ask your Account Manager for more details. Don't forget to kit out your subs, team manager's and supporters! Minimum order is 10 units of each style.



STEP 5

We will email you a Quote/Order Confirmation

Please review all details carefully to ensure the product, sizes, quantity and artwork/ logo details are correct. Need to make a change? It happens. Please contact your Account Manager within 24 hours.



STEP 6

Approve your customised artwork proof

Although we make every effort to provide an error free product, your cooperation is required as well. The proof is submitted to you to ensure the accuracy (size, position, colour) of your artwork/logo. You, the customer, are responsible for ensuring the complete accuracy of this proof. Upon approving the proof you will be committing to purchase the goods so please check carefully. Once approved - leave the rest to us! We will advise when you can expect to see your order.

NETBALL DRESSES

STEP 1

Pick your style

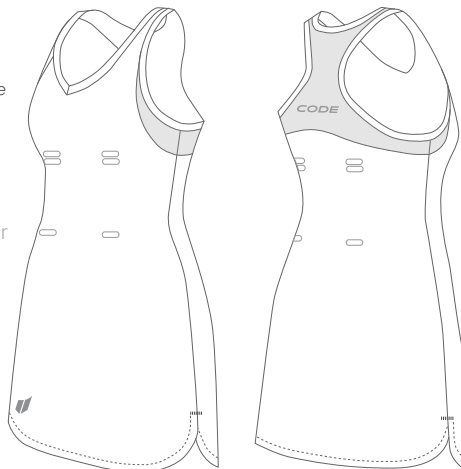


G8120L | ULTIMATE NETBALL DRESS

Fabric | Main 250gsm Polyester Spandex, Contrast panels 180gsm Polyester Pinhole
Ladies sizes | 8 - 24

PRODUCT DETAIL

The CODE Ultimate netball dress is a representative level dress with superior fabric technology. The main fabric is a polyester/spandex mix which provides flexibility and comfort with movement. The contrast pinhole mesh underarm and back panel aid ventilation. This style has a curved hemline and extra length at the back for added coverage while on the court. A flattering V-neckline is feminine without being too low. The racer back style is wide enough to cover under garment support. This style comes with Velcro positioned on the front and back.



TWO FABRIC OPTIONS AVAILABLE IN THIS STYLE

G8130L | BEYOND NETBALL DRESS

G8130K | KIDS BEYOND NETBALL DRESS

Fabric | Main 200gsm Polyester Interlock,
Contrast panels 220gsm Polyester Spandex
Ladies sizes | 8 - 24
Kids sizes | K6 - K14

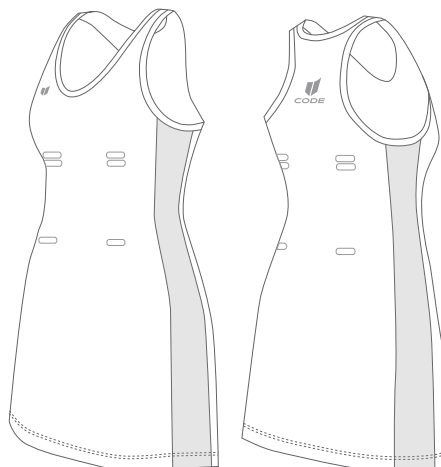
G8131L | IMMERSE NETBALL DRESS

G8131K | KIDS IMMERSE NETBALL DRESS

Fabric | Main 200gsm Polyester Birdseye,
Contrast panels 220gsm Polyester Spandex
Ladies sizes | 8 - 24
Kids sizes | K6 - K14

PRODUCT DETAIL

The Beyond/ Immerse netball dress is available in two different fabric options. Both options have a polyester/spandex side panel allowing for extra movement and flexibility. The neckline is curved and the racer back style is wide enough to cover most under garment support. The hemline is straight with a twin needle finish. This style comes with Velcro positioned on the front and back.



NETBALL TOPS

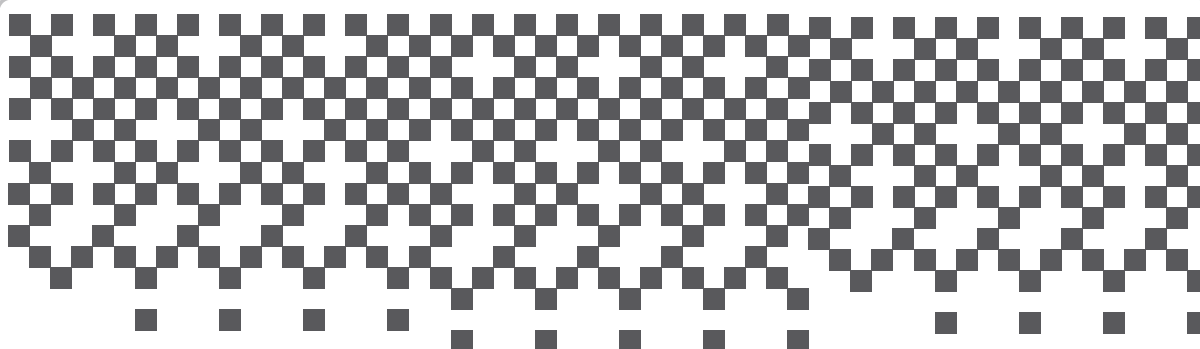


G1120L | ULTIMATE NETBALL SINGLET

Fabric | Main 220gsm Polyester Spandex, Contrast panels 180gsm Polyester Pinhole
Ladies sizes | 8 - 24

PRODUCT DETAIL

The Ultimate netball singlet has a slight curved hemline both front and back for added length while on the court. The main panel is a polyester/spandex blend providing maximum movement and the underarm and back paneling is pinhole mesh which adds ventilation. Both the neckline and armhole have a 18mm wide trim. This style comes with Velcro positioned on the front and back.



DESIGN OVERLAY

Add a design overlay to a panel/s to create texture and a unique look. Review more designs online: codesport.co.nz.
Above is an example of the 'Cascade' design overlay used on DNA/Focus Netball singlet on Studio Design IV.

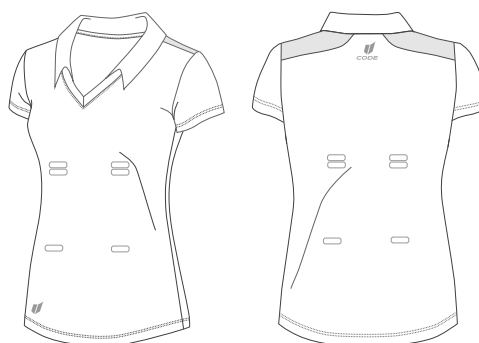
G2140L | BEYOND NETBALL TOP

G2140K | KIDS BEYOND NETBALL TOP

Fabric | Main 200gsm Polyester Interlock, Contrast 150gsm Plum Mesh
Ladies sizes | 8 - 24
Kids sizes | K6 - K14

PRODUCT DETAIL

The Beyond netball top is designed to fit slightly looser against the body. The self fabric collar and short sleeve offers added protection from the elements. The main fabric is a breathable polyester interlock which has a smooth finish and a mesh panel is added to the shoulder line for a contemporary look. This style comes with Velcro positioned on the front and back.





TWO FABRIC OPTIONS AVAILABLE IN THIS STYLE

G1130L | DNA NETBALL SINGLET

G1130K | KIDS DNA NETBALL SINGLET

Fabric | 200gsm Polyester Interlock

Ladies sizes | 8 - 24

Kids sizes | K6 - K14

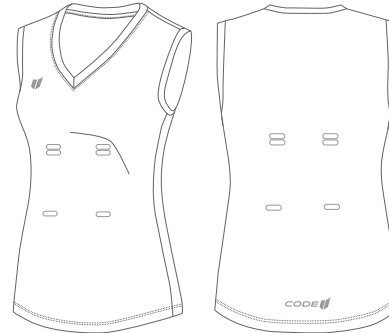
G8131L | FOCUS NETBALL SINGLET

G8131K | KIDS FOCUS NETBALL SINGLET

Fabric | 165gsm Polyester Birdseye Mesh

Ladies sizes | 8 - 24

Kids sizes | K6 - K14



PRODUCT DETAIL

The DNA/Focus netball singlet is available in two fabrics.

This style has limited panel lines allowing your team

colours to designed to its full potential. The V-neckline suits most

body types and the wider shoulder and back offer more coverage. This

style comes with Velcro positioned on the front and back.

**WE BELIEVE IN FAIR PLAY . TEAMWORK
STANDING BY THE COACH . RESPECTING THE REF
WINNING WITH CLASS . LOSING WITH GRACE
ACTING WITH DIGNITY . BETTERING OUR BEST
WORKING TOGETHER**

WE HONOUR THIS CODE . ON AND OFF THE FIELD

NETBALL LOWERS



G6150L | ULTIMATE NETBALL SKORT

G6150K | KIDS ULTIMATE NETBALL SKORT

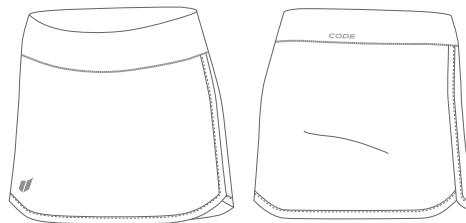
Fabric | Outer 250gsm Polyester Spandex, Inner Short 220gsm Spandex

Ladies sizes | 6- 24

Kids sizes | K6 - K14

PRODUCT DETAIL

Pair the Ultimate netball singlet with this Ultimate netball skort for an elite two piece uniform. This skort has an inner short for added coverage. The wide waistband is comfortable and offers stability with movement. The side and hemline trim reflects the finish on the Ultimate netball singlet.



TWO FABRIC OPTIONS AVAILABLE IN THIS STYLE

G6160L | BEYOND WRAP NETBALL SKIRT

G6160K | KIDS BEYOND WRAP NETBALL SKIRT

Fabric | 200gsm Polyester Interlock

Ladies sizes | 6- 24

Kids sizes | K6 - K14

G6161L | IMMERSE WRAP NETBALL SKIRT

G6161K | KIDS IMMERSE WRAP NETBALL SKIRT

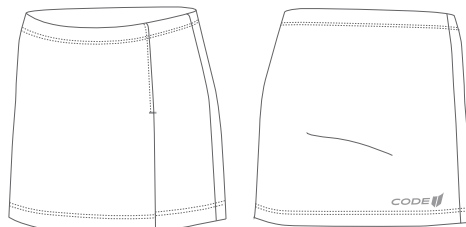
Fabric | 200gsm Polyester Birdseye Mesh

Ladies sizes | 6- 24

Kids sizes | K6 - K14

PRODUCT DETAIL

The wrap skirt is a slimline design which is stitched to the hipline at the side front. The split allows more movement and the stitching ensures the split isn't too revealing.



TWO FABRIC OPTIONS AVAILABLE IN THIS STYLE

G6170L | DNA 6 PANEL NETBALL SKIRT

G6170K | KIDS DNA 6 PANEL NETBALL SKIRT

Fabric | 200gsm Polyester Interlock

Ladies sizes | 6- 24

Kids sizes | K6 - K14

G6171L | FOCUS 6 PANEL NETBALL SKIRT

G6171K | KIDS FOCUS 6 PANEL NETBALL SKIRT

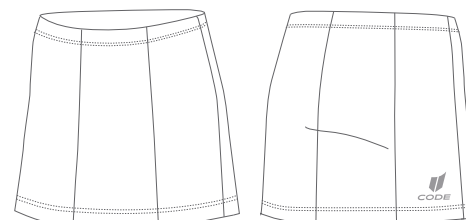
Fabric | 200gsm Polyester Birdseye Mesh

Ladies sizes | 6- 24

Kids sizes | K6 - K14

PRODUCT DETAIL

The 6 panel skirt is an A-line design allowing for a wider stride. The elastic waist offers stability with movement. This style is available in two fabric options allowing you to mix and match with your preferred CODE top.



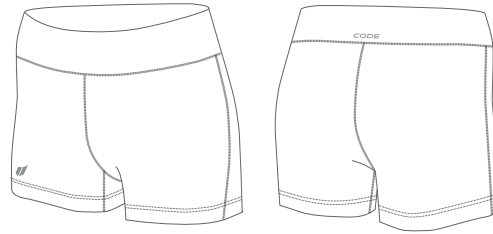


G9100L | GAMEDAY 4" SHORT **G9100K | KIDS GAMEDAY 4" SHORT**

Fabric | 270gsm Polyester Interlock

Ladies sizes | 6 - 24

Kids sizes | K6 - K14



PRODUCT DETAIL

This fully sublimated 4" short provides coverage under the CODE Wrap and 6 Panel skirts. The wide waistband is comfortable and provides stability with movement. The flat seam stitching reduces friction against the skin.

G10110 | GAMEDAY BIB SET (INTERLOCK)

Fabric | 200gsm Polyester Interlock

One Size

G10111 | GAMEDAY BIB SET (BIRDSEYE)

Fabric | 200gsm Polyester Birdseye Mesh

One Size



PRODUCT DETAIL

Sublimated bib set - choose your background colour & lettering colours. 6 pieces of Velcro for extra adhesion. Velcro is available in Black or White.

1 SET = 7 POSITIONS (14 BIBS)

NETBALL HARDWARE

CODE is the supplier of Sports equipment, including Match and Training balls in varying sizes - talk to your Account Manager about your requirements.



STEP 2

Choose your Studio Design



Note: The Studio Design Colours shown are for visualisation only. These are fully customisable.

ULTIMATE | STUDIO DESIGNS



STUDIO DESIGN I



STUDIO DESIGN II



BEYOND + IMMERSE | STUDIO DESIGNS



STUDIO DESIGN I



STUDIO DESIGN II



STUDIO DESIGN III



STUDIO DESIGN IV



YOUR TEAM. YOUR COLOURS.

HONOUR THE CODE



Note: The Studio Design Colours shown are for visualisation only. These are fully customisable.

ULTIMATE | STUDIO DESIGNS



STUDIO DESIGN I



STUDIO DESIGN II

BEYOND | STUDIO DESIGNS



STUDIO DESIGN I



STUDIO DESIGN II

YOUR TEAM. YOUR COLOURS.



Note: The Studio Design Colours shown are for visualisation only. These are fully customisable.

DNA + FOCUS | STUDIO DESIGNS



STUDIO DESIGN I



STUDIO DESIGN II



STUDIO DESIGN III



STUDIO DESIGN IV



STUDIO DESIGN V



STUDIO DESIGN VI

YOUR TEAM. YOUR COLOURS.

HONOUR THE CODE



Note: The Studio Design Colours shown are for visualisation only. These are fully customisable.

ULTIMATE | STUDIO DESIGNS



STUDIO DESIGN I



STUDIO DESIGN II

BEYOND + IMMERSE |
STUDIO DESIGNS



STUDIO DESIGN I



STUDIO DESIGN II



STUDIO DESIGN III



DNA + FOCUS |
STUDIO DESIGNS



STUDIO DESIGN I



STUDIO DESIGN II

YOUR TEAM. YOUR COLOURS.

STEP 3
Colour it

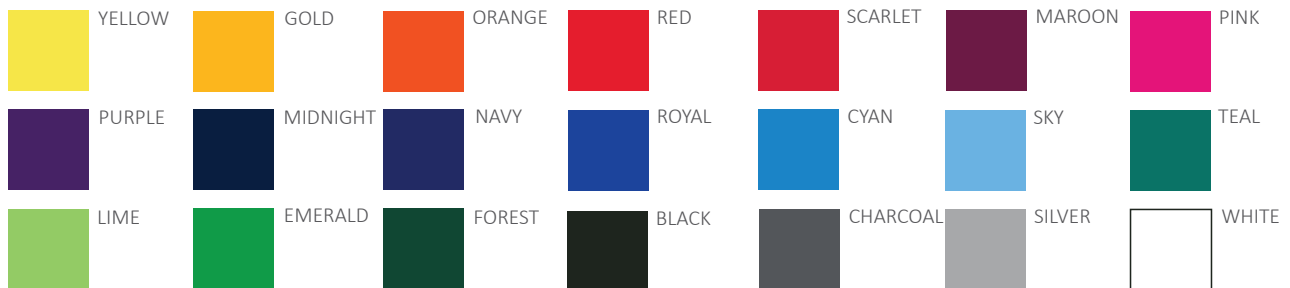


Designing your own CODE Gameday uniform is easy with our Online Kit Builder tool. Your team. Your colours.

codesport.co.nz

Choose from our standard colours or customise with your team's colours. Speak to your Account Manager for more details

STANDARD COLOURS



All CODE items include the CODE logo. We understand that your team kit is a reflection of your team spirit, your team values, your team brand. That is why we are flexible with our CODE brand on your selected styles. Pick the colour of the CODE logo, select the position and even choose the logo style.



Note, some restrictions apply.

STEP 4**Pick Your Sizes****ULTIMATE NETBALL DRESS**

	L8	L10	L12	L14	L16	L18	L20	L22	L24
GARMENT WIDTH (CM)	36	39	41	44	46	49	51	54	56
GARMENT LENGTH (CM)	80	83	87	90	95	100	103	107	109

BEYOND AND IMMERSE NETBALL DRESS

	K6	K8	K10	K12	K14	L8	L10	L12	L14	L16	L18	L20	L22	L24
GARMENT WIDTH (CM)	31	34	36	39	41	36	39	41	44	46	49	51	54	56
GARMENT LENGTH (CM)	65	68	71	77	78	80	83	87	90	95	100	103	107	109

ULTIMATE NETBALL SINGLET

	L8	L10	L12	L14	L16	L18	L20	L22	L24
GARMENT WIDTH (CM)	39	42	45	48	51	54	57	60	63
GARMENT LENGTH (CM)	60	62	64	66	68	70	74	76	80

BEYOND NETBALL TOP

	K6	K8	K10	K12	K14	L8	L10	L12	L14	L16	L18	L20	L22	L24
GARMENT WIDTH (CM)	33	35	37	39	40	44	47	50	53	56	59	62	64	66
GARMENT LENGTH (CM)	48	50	51	53	55	64	67	69	71	74	77	80	82	84



DNA AND FOCUS NETBALL SINGLET

	K6	K8	K10	K12	K14	L8	L10	L12	L14	L16	L18	L20	L22	L24
GARMENT WIDTH (CM)	33	35	37	39	40	39	42	45	48	51	54	57	60	66
GARMENT LENGTH (CM)	48	50	51	53	55	64	62	64	66	68	70	74	76	80

ULTIMATE NETBALL SKORT

	K6	K8	K10	K12	K14	L8	L10	L12	L14	L16	L18	L20	L22	L24
GARMENT WAIST (CM)	25	27	29	31	33	35	36	38	41	44	47	49	51	53
GARMENT OUTSEAM (CM)	28	29	30	31	32	33	36	35	36	37	38	39	40	42

BEYOND/IMMERSE WRAP NETBALL SKIRT

	K6	K8	K10	K12	K14	L8	L10	L12	L14	L16	L18	L20	L22	L24
GARMENT WAIST (CM)	22	23	24	25	26	28	30	32	34	36	38	40	42	44
GARMENT OUTSEAM (CM)	32	33	34	35	36	37	38	39	40	41	42	43	45	47

DNA/FOCUS 6 PANEL NETBALL SKIRT

	K6	K8	K10	K12	K14	L8	L10	L12	L14	L16	L18	L20	L22	L24
GARMENT WAIST (CM)	22	23	24	25	26	28	30	32	34	36	38	40	42	44
GARMENT OUTSEAM (CM)	32	33	34	35	36	37	38	39	40	41	42	43	45	47