

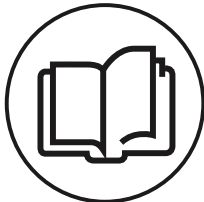


---

**GAMEDAY**  
**ROWING CATALOGUE**

# HOW TO ORDER

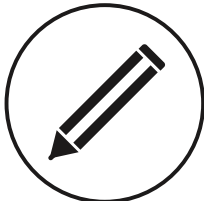
Ordering your custom DYO Gameday gear is made easy with only a few steps. Represent your Club, Team, School or Business in style with our fully customisable colour and design options. With our Online Kit Builder, you can see exactly how your unique design will look. Start designing now at [codesport.co.nz](https://codesport.co.nz).  
Your team. Your colours.



## STEP 1

### Pick your style

Choose your sport CODE and style.



## STEP 2

### Choose your Studio Design

Each style has various Studio Designs to choose from.



## STEP 3

### Colour it

Colour up your chosen Studio Design with your colours. Don't see the colours you want or a Studio Design you like? Send us your artwork/logo and we can customise a design for your Team. Note some custom services may incur an extra fee. Talk to your Account Manager for more details.



## STEP 4

### Advise the quantity and sizes required per style

Refer to the size guide provided or ask your Account Manager for more details.  
Don't forget to kit out your subs, team managers and supporters! Minimum order is 10 units of each style.



## STEP 5

### We will email you a Quote/Order Confirmation

Please review all details carefully to ensure the product, sizes, quantity and artwork/ logo details are correct. Need to make a change? It happens. Please contact your Account Manager within 24 hours.



## STEP 6

### Approve your customised artwork proof

Although we make every effort to provide an error free product, your cooperation is required as well. The proof is submitted to you to ensure the accuracy (size, position, colour) of your artwork/logo. You, the customer, are responsible for ensuring the complete accuracy of this proof. Upon approving the proof you will be committing to purchase the goods so please check carefully. Once approved - leave the rest to us! We will advise when you can expect to see your order.

## STEP 1

Pick your style



### G9110M | ULTIMATE ROWSUIT

### G9110K | KIDS ULTIMATE ROWSUIT

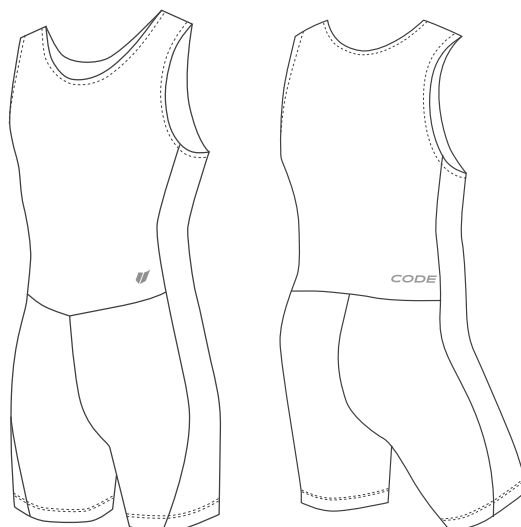
Fabric | Nylon/Polyester Spandex Cut and Sew bottom with Polyester Sublimate upper

Men's sizes | XS - 3XL

Kids sizes | K10 - K14

#### PRODUCT DETAIL

This rowsuit has a nylon/polyester cut and sew lower half, which is available in black only. The dyed cut and sew base is a single layer to reduce friction/rubbing on the base. The upper half and side panels are fully sublimated to showcase your team colours. This high performance suit has a twin needle stitched neckline, armhole and leg hem to reduce bulk. There is a subtle V at the front waistline and a slight curve edge on the side panel which highlights the bodies natural lines.



### G9120M | BEYOND ROWSUIT

### G9120K | KIDS BEYOND ROWSUIT

Fabric | Nylon/Polyester Spandex Cut and Sew bottom with Polyester Sublimate upper

Men's sizes | XS - 3XL

Kids sizes | K10 - K14

#### PRODUCT DETAIL

This rowsuit has a fully sublimated upper with a dyed cut and sew lower half in a single layer to reduce friction/rubbing on the base. The neckline edge and armhole are finished with a 12mm trim.



## STEP 2

### Choose your Studio Design



*Note: The Studio Design Colours shown are for visualisation only. These are fully customisable.*

#### ULTIMATE | STUDIO DESIGNS



STUDIO DESIGN I



STUDIO DESIGN II

#### BEYOND | STUDIO DESIGNS



STUDIO DESIGN I



STUDIO DESIGN II

**YOUR TEAM. YOUR COLOURS.**

**HONOUR THE CODE**



### STEP 3

#### Colour it

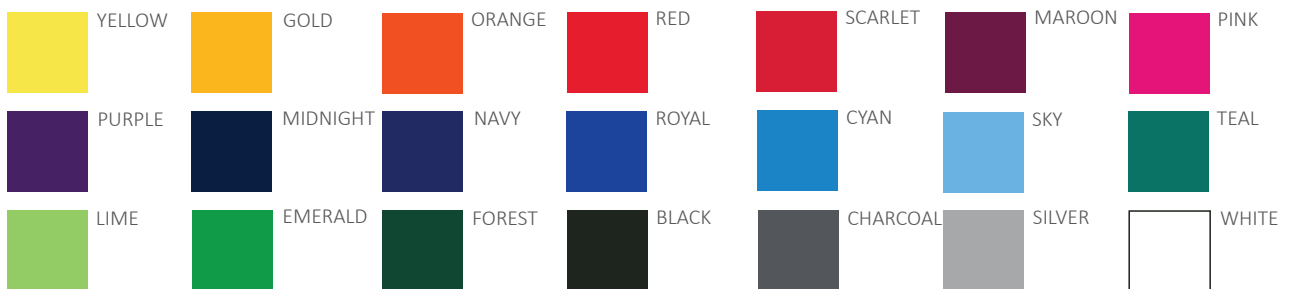


Designing your own CODE Gameday uniform is easy with our Online Kit Builder  
Your team. Your colours.

[codesport.co.nz](https://codesport.co.nz)

Choose from our standard colours or customise with your team's colours. Speak to you Account Manager for more details

## STANDARD COLOURS



All CODE items include the CODE logo. We understand that your team kit is a reflection of your team spirit, your team values, your team brand. That is why we are flexible with our CODE brand on your selected styles. Pick the colour of the CODE logo, select the position and even choose the logo style.



*Note, some restrictions apply.*

Due to the high stretch of these rowsuits, to accommodate body movement, we strongly recommend that all logos are sublimated onto the suits, as part of the graphic design. Embroidered and printed logos are unsuitable as they cannot stretch adequately to match the fabric movement.

**STEP 4****Pick Your Sizes****MEN'S ULTIMATE AND BEYOND ROWSUIT**

	XS	S	M	L	XL	2XL	3XL
GARMENT WIDTH (CM)	49	54	56	58	60	63	66
GARMENT LENGTH (CM)	68	70	72	74	76	78	80

**KIDS ULTIMATE AND BEYOND ROWSUIT**

	K10	K12	K14
GARMENT WIDTH (CM)	42	44	46
GARMENT LENGTH (CM)	59	62	65